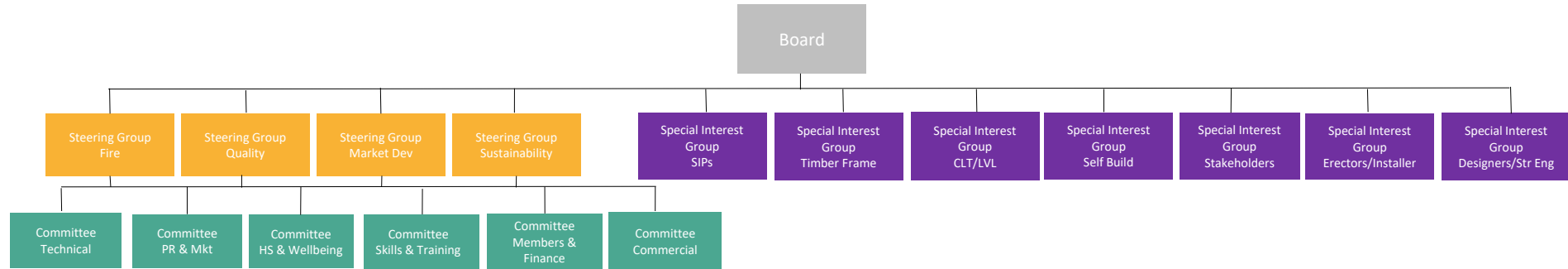


STA Re-structure 2020 Organogram

Apr-20



Steering Groups

Fire
Chair - A Goodfellow

Quality
Chair - P Blunt

Market Dev
Chair - K Riley

Sustainability
Chair - J English

Operations Support - A Orriss

Committees

Technical
Chair - A Orriss
Non Exec Director Support - A Goodfellow

PR and Marketing
Chair - A Orriss
Non Exec Director Support - K Riley

Health and Safety
Chair - A Orriss
Non Exec Director Support - N Clark

Skills and Training
Chair - A Orriss
Non Exec Director Support - R Baldwin

Members and Finance
Chair - A Carpenter
Non Exec Director Support - L Young

Commercial
Chair - J Capper
Non Exec Director Support - J English
Ops Support - A Carpenter

Special Interest Group

SIPs
Chair - A Carpenter
Non Exec Director Support - P Blunt

Timber Frame
Chair - A Carpenter
Non Exec Director Support - B Skilton/
C Murray

CLT/LVL
Chair - A Carpenter
Non Exec Director Support - N Clark

Self Build
Chair - B Davis
Non Exec Director Support - M Stevenson

Stakeholder/Think Tank
Chair - A Carpenter
Non Exec Director Support - B Skilton

Erectors
Chair - A Carpenter
Non Exec Director Support - R Baldwin

Designers
Chair - A Carpenter
Non Exec Director Support - TBA